



Ronin Camera – Specification

The Ronin Camera is a high-performance dual camera product that integrates both a standard high-resolution 1080p video camera and a FLIR Thermal Imaging camera. The complete system is installed in a camouflaged outdoor case designed for remote motion detection and image capture of animals, people, bicycles, and vehicles. The batteries, SD card, and all other elements necessary for extended outdoor use are all included in the compact case.

In addition, the Ronin Camera contains either a powerful radio transceiver or a cell modem that allows for remote live viewing and sending “alerts” when motion is detected. The radio can send images and videos up to 9 miles away (*) to a Ronin Sentinel base station which forwards the alert by text or email completely free to the user. The cell modem version requires a monthly fee cellular plan. (* radio distance depends on antenna and terrain, see below)

For permanent installations, a solar panel or wall power connected to camera can make it last indefinitely. In battery only mode, batteries typically last 8-12 months or up to 35,000 images.



General Specifications:

- Ultra-low power motion detection Passive IR sensor 80’ to 100’ away or FLIR up to 200’ distance. Adjustable sensitivity, debounce, and FLIR zone of detection.
- High speed SD Card slot supports up to 2TB cards. Swap cards at any time without restarting.
- Fast trigger time of 0.1 sec in Large Solar/Wall power modes, 0.5 sec in Small Solar/Batt+FLIR mode, or ~3 sec Batt Only mode.
- Built in solar charger with MPPT (Maximum Power Point Tracking)
- 802.11 WiFi, USB, and Radio/Cell Modem link supported.
- Integrated GPS receiver with camera security tracking options
- Ronin Camera Link app for Setup
- Wide temperature range operation -20C to +85C.
- Locking front panel and secure case strap points.
- 6 Month warranty.
- Designed and built in the U.S.A.!

Radio Specifications:

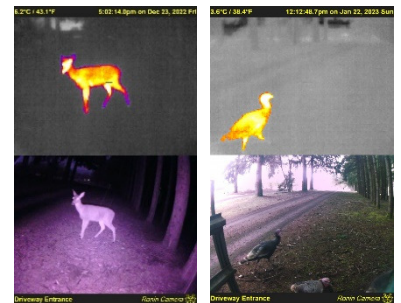
- 915Mhz radio with 3 speed modes
- Sends alerts for:
 - + Motion with image or video
 - + Low Battery
 - + Lost Link
- Supports wide range of antennas to allow for greater distance.
- U.S.A, Canada, South America, and Australia certified modules.
- Camera range up to 9 miles in most conditions. Longer ranges possible depending on line of sight, obstacles, and antenna type. Contact us for more details.
- Daisy chain cameras together for even greater range!

Camera Specifications:

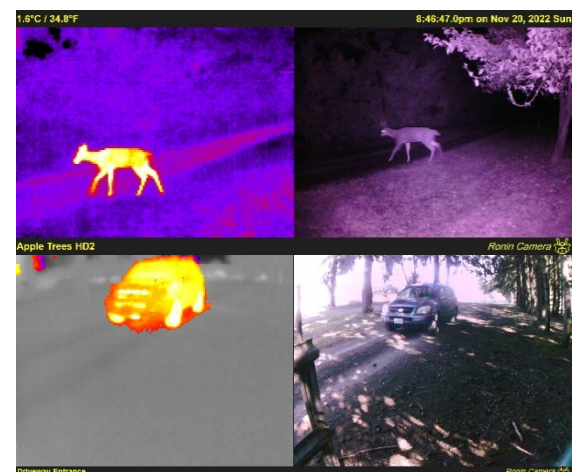
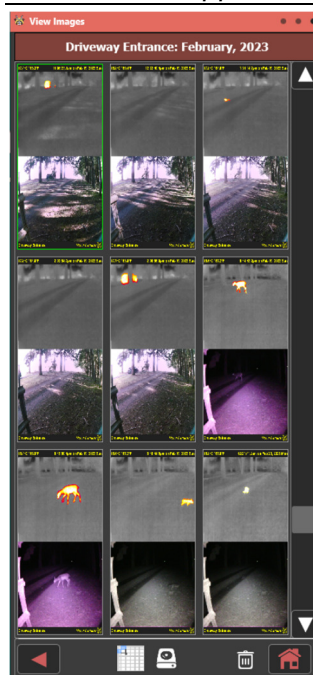
- 5MP Camera
- Record Images and/or Videos
- Up to 1080p video with frame rate and video length settable by user
- Auto detection of Day/Night modes with automatic IR Cut filter.
- Invisible 940nm infrared light panel to illuminate objects up to 50’ away from the camera at night without giving camera position away.
- 110 degree field of view.
- 1.4um x 1.4um pixels with OmniBSI technology
- Automatic Exposure, White Balance, Band Filter, Black Level Calibration, and 50/60 Hz Luminance Detector
- Auto sync to FLIR camera

FLIR Thermal Specifications:

- 160x120 Resolution
- Long Wave Infrared (LWIR) sees at night and through fog, snow, and rain
- Thermal Sensitivity < 50mK
- Proprietary “Color Tracker” technology to highlight motion
- Multiple view types including Color Tracker, Fusion, Grayscale, etc.



Camera Link App:



Diamond Edge Technology, LLC
90164 Shore Lane
Eugene, OR 97402

www.ronincamera.com
ryan@detllc.com

(541) 780-6869 (ext 3#)

